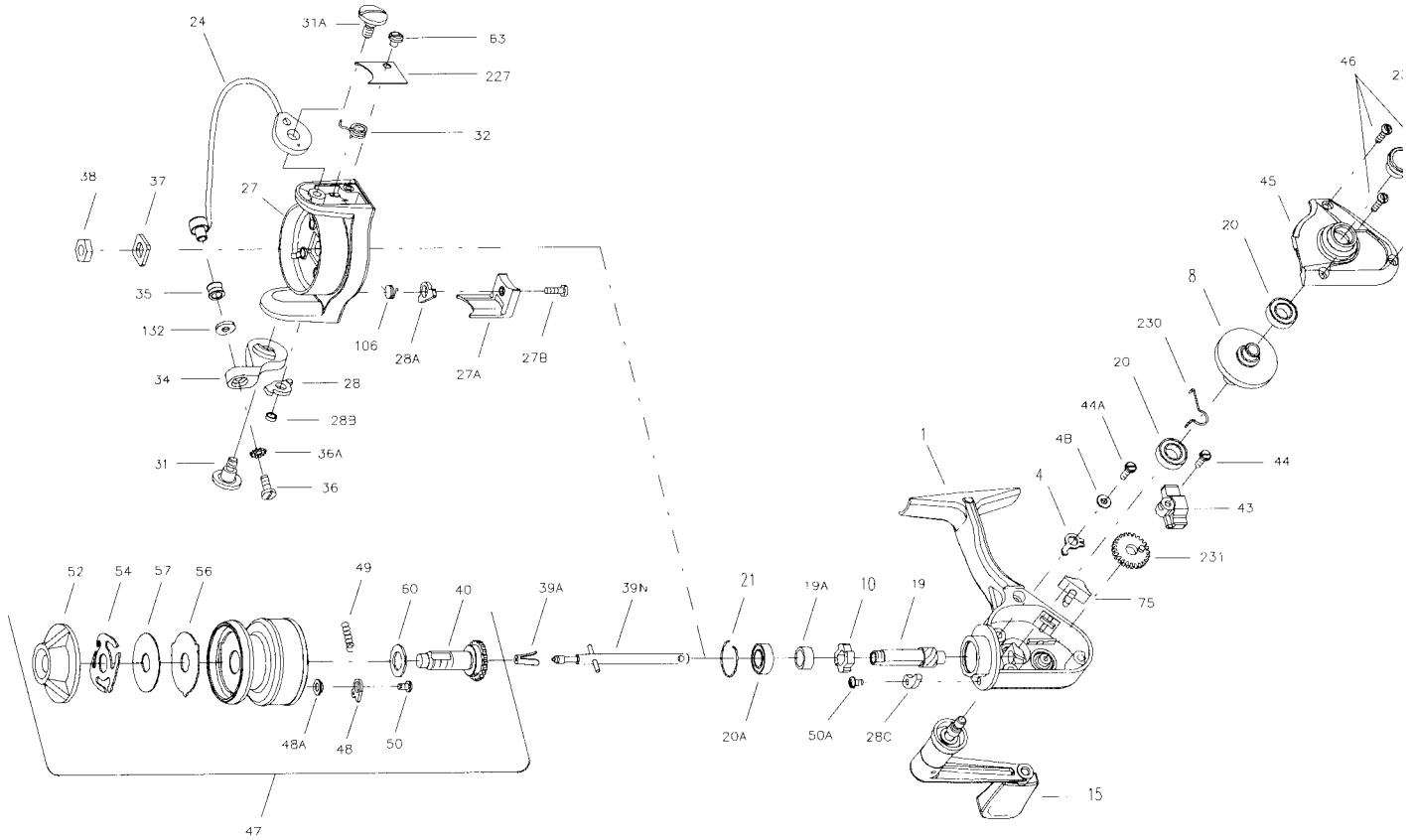




PARTS AND PRICE LIST FOR MODEL 4200SS



Key No.	Part No.	Description	Price	Key No.	Part No.	Description	Price
1	001 4200	Housing	\$ 7.50	38	038 720	Rotor Cup Nut	\$.5
4	004 4200	Dog	1.50	39A	039A4300	Spool Retainer	.5
4B	004B4200	Dog Lever Bushing	.50	39N	039N4200	Spool Shaft	3.4
8	008 4200	Main Gear Assembly	10.60	40	040 4200	Spool Sleeve Complete	3.5
10	010 4200	Ratchet	.90	43	043 4200	Crosswind Block	1.5
15	015 4200	Handle (Complete)	9.75	44	044 4200	Crosswind Block Screw	.5
19	019 4200	Pinion	10.60	44A	046A4300	Dog Screw	.4
19A	019A4200	Pinion Spacer	.50	45	045 4200	Housing Cover	3.3
20	020 4200	Ball Bearing (Main Gear) (2 req.)	10.00	46	046 4300	Housing Cover Screw (3 req.)	.5
20A	055 4200	Ball Bearing (Pinion)	10.00	47	047 4200	Spool (Complete)	18.6
21	021 4200	Bearing Lock Ring	.50	48	048N4300	Click Tongue	.5
24	024 420	Bail Wire Assembly	6.60	48A	048A4300	Click Tongue Washer	.5
27	027 4200	Rotor Cup	5.00	49	049 4300	Click Spring	.5
27A	027A4200	Bail Trip Cover	1.25	50	063A2.5FR	Click Spring Screw	.4
27B	027B420	Bail Trip Cover Screw	.55	50A	046A4300	Trip Cam Screw	.4
28	028 420	Trip Lever	1.10	52	052 716	Drag Knob	2.5
28A	028A440	Cam Lever	1.25	54	054 4200	Drag Spring	1.9
28B	028B4200	Trip Lever Bushing	.70	56	056 4200	Drag Washer HT100	1.2
28C	028C4200	Trip Cam	1.10	57	057 4200	Drag Washer-Metal	.7
31	031 420	Bail Arm Screw	1.00	60	060 716	Spool Sleeve Washer	.4
31A	031A420	Bail Cam Screw	1.00	63	063 500S	Bail Spring Cover Screw	.8
32	032 420	Bail Spring	.90	75	075 4300	Eccentric Button	.8
34	034 420	Bail Arm	2.25	106	106 5500	Cam Lever Spring	.5
35	035 420	Line Roller	3.10	132	132 420	Roller Washer	.9
36	036 420	Bail Stud Screw	.45	227	227 4300	Bail Spring Cover	.5
36A	036A750	Lock Washer	.45	230	230 4200	Friction Dog Spring	.4
37	037 420	Rotor Cup Washer	.50	231	231 4200	Crosswind Gear	3.0
				233	233 4200	Bearing Cover	2.0